

## Manual

# DNA Marker Lambda/BstE II

702-8454 bp range

catalog #	size
3510-500	100-250 application

For research use only.

### Guarantee

A&A Biotechnology provides a guarantee on this product.

The company does not guarantee the correct performance of this kit in the event of:

- not adhering to the supplied protocol
- use of not recommended equipment or materials
- use of other reagents than recommended or which are not a component of the product
- use of expired or improperly stored product or its components



## Description

**DNA Marker Lambda/BstE II** is ready to use DNA size marker in the range of 702-8454 bp. It additionally contains two dyes for easy visual control of agarose electrophoresis progress.

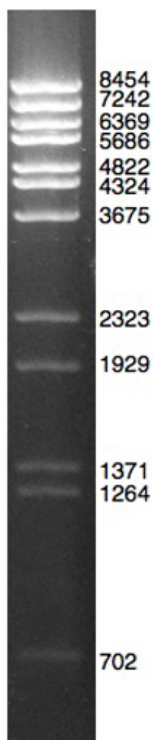
DNA Marker Lambda/BstE II consists of specific size fragments from 702 to 8454 bp. All fragments are blunt-ended.

## Contents

component	quantity	concentration	storage
DNA Marker Lambda/BstE II	500 µl	0.1 µg/µl	4-8 °C
<b>Storage buffer:</b> 10 mM Tris-HCl, pH 8.5; 5 mM EDTA			
<b>6x loading dye buffer:</b> 3% ficoll, 0.003% bromophenol blue, 0.003% xylene cyanole FF			

## Application

**Recommended use:** 2-5 µl of marker per line.



1% agarose gel

DNA marker fragments list: 702, 1264, 1371, 1929, 2323, 3675, 4324, 4822, 5686, 6369, 7242, 8454 bp.



**A&A BIOTECHNOLOGY**  
innovating life science

A&A Biotechnology, ul. Strzelca 40, 80-299 Gdańsk, Poland  
phone +48 883 323 761, +48 600 776 268  
info@aabiot.com, www.aabiot.com

